

## PRODUCT CATALOGUE

# PVP -Polyvinylpyrrolidone-

- For immobilization of sperm.
- Molecular mass is 360,000.
- No animal derivative is contained.
- Ready to Use. You can choose your preferred concentration.



REF	Code	Details	Contents
94310	PVP10-05×5	PVP 10%	0.5mL×5
94311	PVP7-05×5	PVP 7%	0.5mL×5
94312	PVP5-05×5	PVP 5%	0.5mL×5
94313	PVP3-05×5	PVP 3%	0.5mL×5

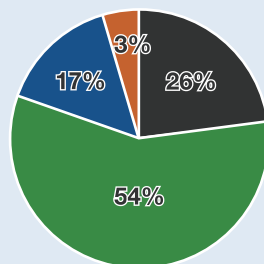
### COMPONENTS

Calcium Chloride / Gentamicin / Glucose / HEPES /  
Magnesium Sulfate / Polyvinylpyrrolidone / Potassium Chloride /  
Potassium Phosphate / Recombinant Human Albumin /  
Sodium Bicarbonate / Sodium Chloride / Sodium Lactate /  
Sodium Pyruvate

### QUALITY CONTROL

pH 7.2-7.6 / Endotoxin <0.25EU/mL / Sterility Test /  
Sperm Motility Index  
Storage: 2-8℃  
Shelf life: 9 months

## RESULT



Percentage of PVP used by the number of facilities

- PVP 10% ( REF 94310 )
- PVP 7% ( REF 94311 )
- PVP 5% ( REF 94312 )
- PVP 3% ( REF 94313 )

Specification may change without pre-notice for purpose of product improvement.

## Kitazato Corporation

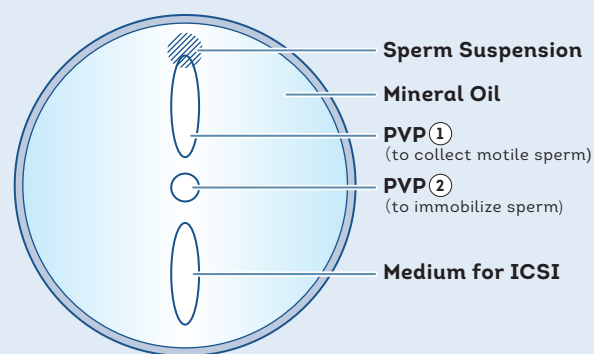
HEADQUARTERS : 100-10 Yanagishima, Fuji, Shizuoka 416-0932 JAPAN

TOKYO : 1-1-8 Shibadaimon, Minato-ku, Tokyo 105-0012 JAPAN

**Mail** [contact@kitazato.co.jp](mailto:contact@kitazato.co.jp)

# PROTOCOL

- 1 Make a dish for ICSI as in the figure. Dispense sperm suspension on upper part of PVP①.
- 2 Place the oocyte on upper part of the medium for ICSI.
- 3 Wash the holding pipette with medium for ICSI and injection pipette with PVP①. Aspirate each medium into each pipette after washing.\*
- 4 Choose sperm with good motility and normal morphology from the bottom part of PVP①.
- 5 Move the motile sperm into PVP②. The sperm should be placed vertically. Hold up the Injection pipette a little, taking an appropriate distance from the sperm suspension. This is to avoid moving the sperm with the pipette.
- 6 Press down the tail of the sperm by the injection pipette.
- 7 Slide the injection pipette to the right. Immobilization of sperm is completed if the tail is bent at about 90° angle.
- 8 Aspirate the sperm from tail to head and proceed to ICSI.



\*Holding pipette should be kept out of the drop after aspirating the medium.

This text is made with support from Kanagawa Ladies Clinic.