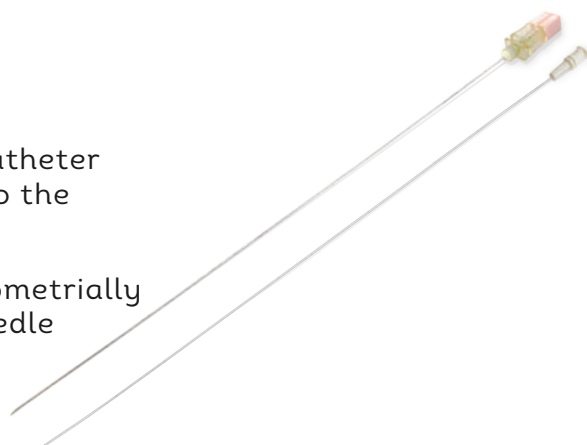


PRODUCT CATALOGUE

TOWAKO® Method

- TOWAKO® Method is a special set of needle and catheter intended for transmyometrial embryo transfer into the uterine cavity.
- An 18G needle with a stylet is punctured transmyometrially under transvaginal ultrasound-guide. Once the needle is set properly, stylet is removed and embryo is transferred with 2Fr. catheter.
- When the catheter is set firmly into the luer lock handle of the needle, catheter protrudes 1mm beyond the needle tip.

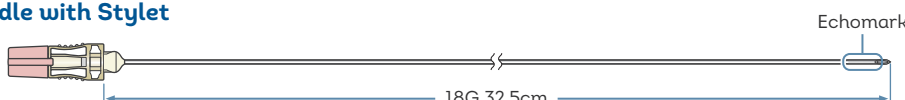


REF	Code	Product Specification	Contents
268003	TMET18G325-325	Needle with Stylet (Outer Diameter 18G / Length 32.5cm) Catheter (Outer Diameter 2Fr / Length 32.5cm)	10pcs / box

QUALITY CONTROL

SAL (Sterility Assurance Level) : 10^{-6} / Sterilized / Endotoxin
 <20EU/device (<0.5EU/ml) / Mouse Embryo Assay
 Read Instruction for Use before use. Do not reuse.

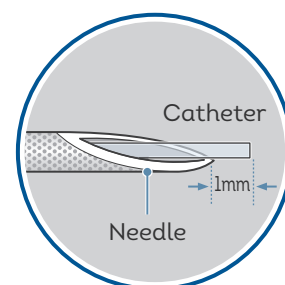
Needle with Stylet



Catheter



Catheter inserted into the Needle



REFERENCES

- Osamu Kato, Ryoza Takatsuka, Ricardo H.Asch. Transvaginal-Transmyometrial Embryo Transfer: The Towako Method; Experiences of 104 Cases. Sterility & Fertility. Vol.59, No.1, January 1993.
- Yasuo Goto, Yoichi Noda, Katsuhiko Narimoto, Yoh Umaoka, Takaski Tokura and Takahide Mori. Pregnancy Achieved by Transferring Blastocysts into Endometrial Stroma in Mice. Human Reproduction. Vol. 7, No. 5, 681-684, 1992.
- Schulman. Migration of Embryo from the Uterus. 1986.

Specification may change without pre-notice for purpose of product improvement.

Kitazato Corporation

HEADQUARTERS : 100-10 Yanagishima, Fuji, Shizuoka 416-0932 JAPAN

TOKYO : 1-1-8 Shibadaimon, Minato-ku, Tokyo 105-0012 JAPAN

Mail contact@kitazato.co.jp

TOWAKO METHOD

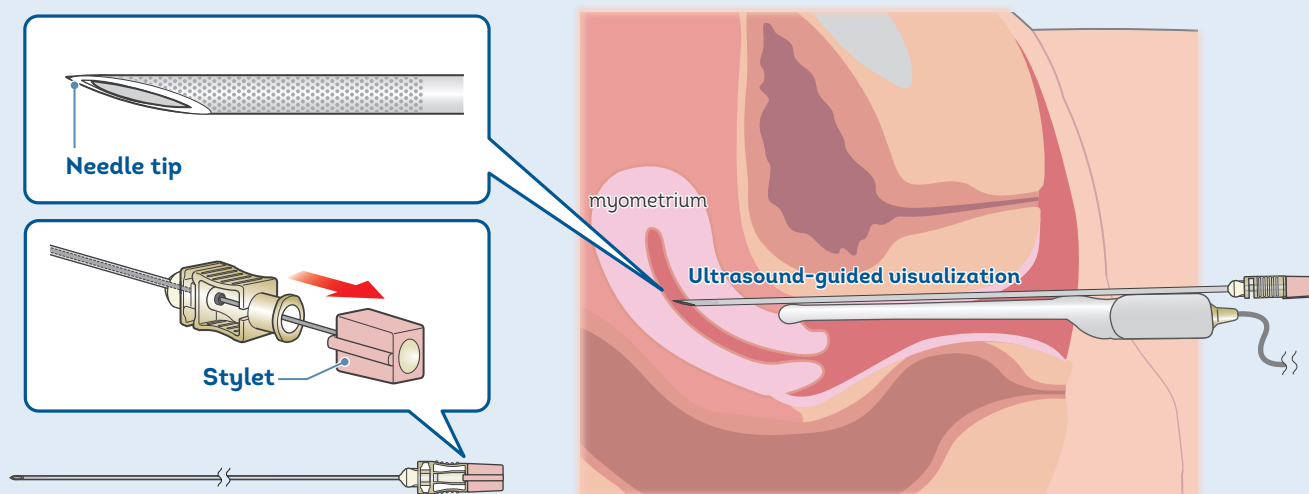
Embryo transfer (ET) is generally done through the cervix, but difficulties can arise when the cervix is narrow or abnormally shaped. TOWAKO* method is effective in such situations as this method pierces a needle transmyometrially into the uterus and the embryo is transferred into the uterine cavity.

*TOWAKO is the group name of the Kato Women's Clinic.

PROTOCOL

Puncture

- 01** Under transvaginal ultrasound guide, insert transmyometrially the 18G needle with a stylet through the endometrium, and make sure that the needle tip reaches the uterine cavity. Then, remove the stylet from the needle.



Embryo transfer

- 02** Load the embryo with the catheter and insert it into the needle. When the catheter is set firmly to the needle luer lock handle, the catheter protrudes 1mm beyond the needle tip.

