

PRODUCT CATALOGUE

# Pentoxifylline

- For activation of immotile sperm.
- For identifying motile sperm, for ICSI for treatment with patients with azoospermia.



REF	Code	Contents
94215	PF-05×5	0.5mL×5

COMPONENTS

Calcium chloride / Gentamicin / Glucose / HEPES /  
Magnesium sulfate / Pentoxifylline / Potassium chloride /  
Potassium phosphate / Sodium bicarbonate / Sodium chloride /  
Sodium lactate / Sodium pyruvate

QUALITY CONTROL

pH 7.2-7.6 / Osmolarity 270-295mOsm/L /  
Endotoxin <0.25EU/mL / Sperm Survival (24h) ≥75% /  
Sperm Penetration ≥3 / Sterility test  
Storage: 2-8℃  
Shelf Life: 6 months

## RELATED PRODUCTS



**PVP**  
**-Polyvinylpyrrolidone-**

REF	Details	Contents
94310	PVP 10%	0.5mL×5
94311	PVP 7%	0.5mL×5



**m-HTF Medium**

REF	Code	Contents
93421	HTFM-100	100mL
93425	HTFM-500	500mL

\*with HEPES



**ICSI Medium**

REF	Code	Contents
93470	ICM-10	10mL×2

Specification may change without pre-notice for purpose of product improvement.

## Kitazato Corporation

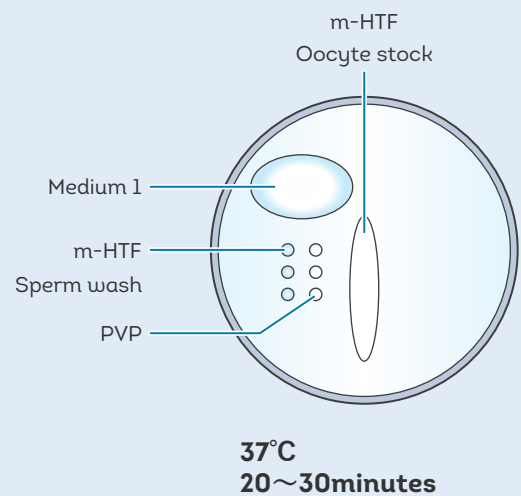
HEADQUARTERS : 100-10 Yanagishima, Fuji, Shizuoka 416-0932 JAPAN  
TOKYO : 1-1-8 Shibadaimon, Minato-ku, Tokyo 105-0012 JAPAN

**Mail** [contact@kitazato.co.jp](mailto:contact@kitazato.co.jp)

# PROTOCOL

## -ICSI-

- 01** Allow Pentoxifylline to reach ambient temperature in a tube.
- 02** Add equal amount of sperm to the Pentoxifylline.  
(This is Medium 1).
- 03** Make a drop of Medium 1 and m-HTF in an ICSI dish.
- 04** After leaving the ICSI dish for 30 minutes in 37°C,  
pick up the motile sperm from Medium 1.
- 05** Wash the selected sperm in the m-HTF drop,  
and then move on to ICSI procedure.



## -IVF-

- 01** Allow Pentoxifylline to reach ambient temperature.  
Add equal amount of pre-washed sperm and equilibrate for 30 minutes in 37°C.
- 02** After equilibration, gently add 10mL of SepaSperm Wash Solution (REF 92131).
- 03** After centrifuging for 5 minutes at 200xg, pick up the sperm pellet and move on to IVF procedure.